

# The New Bancroft School and Neighborhood Campus

Presentation to Board of Education  
December 7, 2021



# Presentation Agenda

- 1. Community / Staff / Agency Interactions**
  - 2. Site Plan Overview**
  - 3. Building Floor Plans**
  - 4. Building Elevation**
  - 5. Phase 2 - Design Development Approval Request**
  - 6. Next Steps**
  - 7. Questions & Answers**
- 

# The New Bancroft School and Neighborhood Campus



Community Interactions

ABHA | BSA+A

# Community / Staff / Agency Interactions

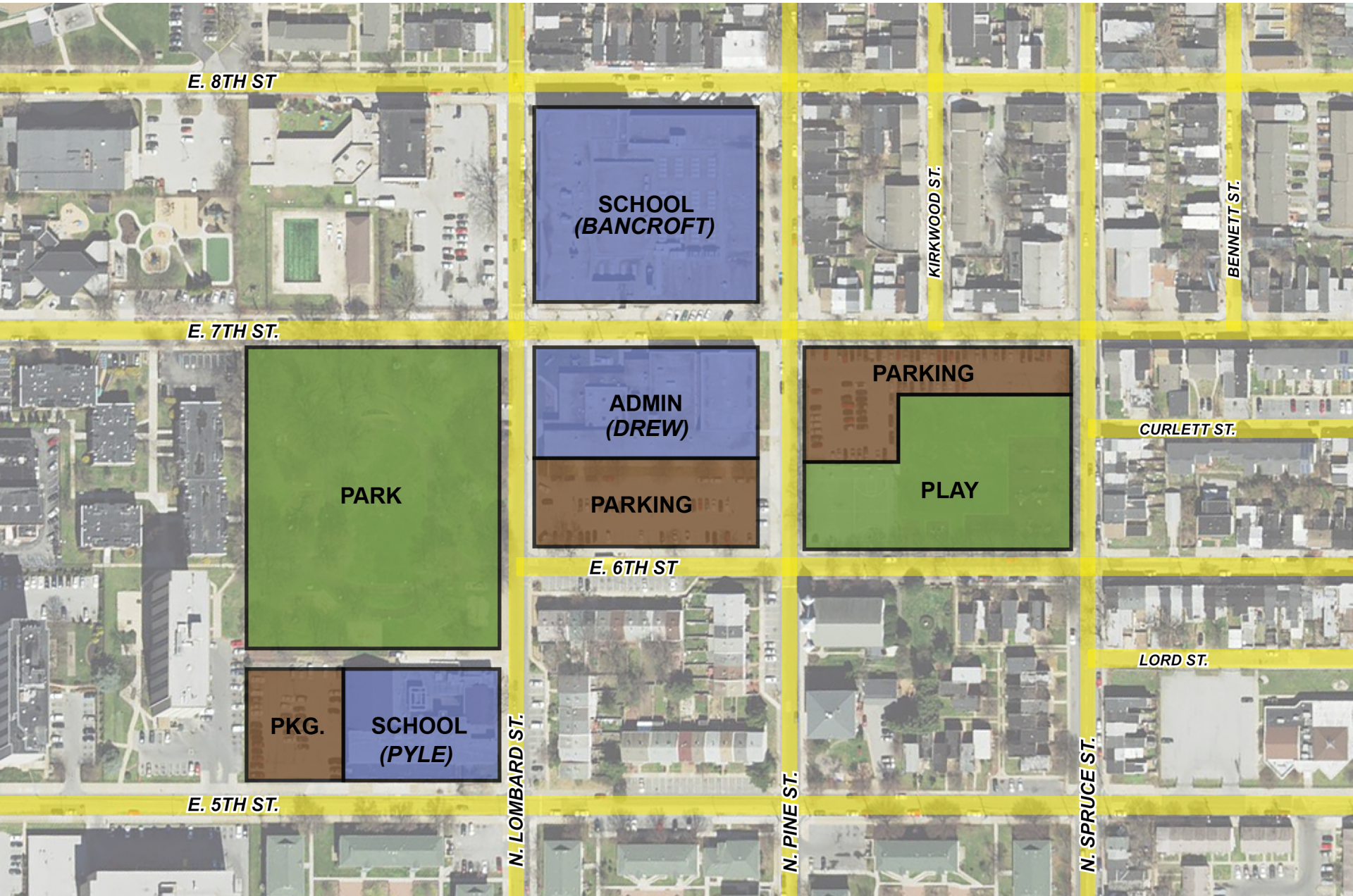
- **Stakeholders Meeting**  
(October 30, 2020)
  - **Staff Meeting**  
(November 23, 2020)
  - **Public Meeting**  
(December 1, 2020)
  - **Staff Programming**  
(April – May 2021 / November 2021)
  - **Student Focus Group**  
(April 13, 2021)
  - **Parent Focus Group**  
(April 22, 2021)
  - **City Agency Coordination Meetings – Ongoing**  
(April / May / June / July / August . . . 2021)
  - **Community Meetings / Presentations - Ongoing**  
(May 10, 2021 / July 14, 2021 / Sept. 7, 2021 / Oct. 5, 2021 / Nov. 16, 2021...)
- 

# The New Bancroft School and Neighborhood Campus



## Site Plan Overview

# Site Analysis – Property Diagram



# Proposed Traffic Circulation



Lombard to be widened and made two way between 6<sup>th</sup> & 7<sup>th</sup>

PARTIAL PINE STREET CLOSURE - TWO FULL BLOCKS NEEDED FOR SCHOOL FOOTPRINT

Reverse direction of 6<sup>th</sup> Street between Lombard and Spruce

Compton Park

East 7<sup>th</sup> Street

East 6<sup>th</sup> St.

Pine

Pine

Spruce St.

Lombard St.

# Site Analysis – Building Footprint







# The New Bancroft School and Neighborhood Campus



## Building Floor Plans



# Building Footprint – Second Floor



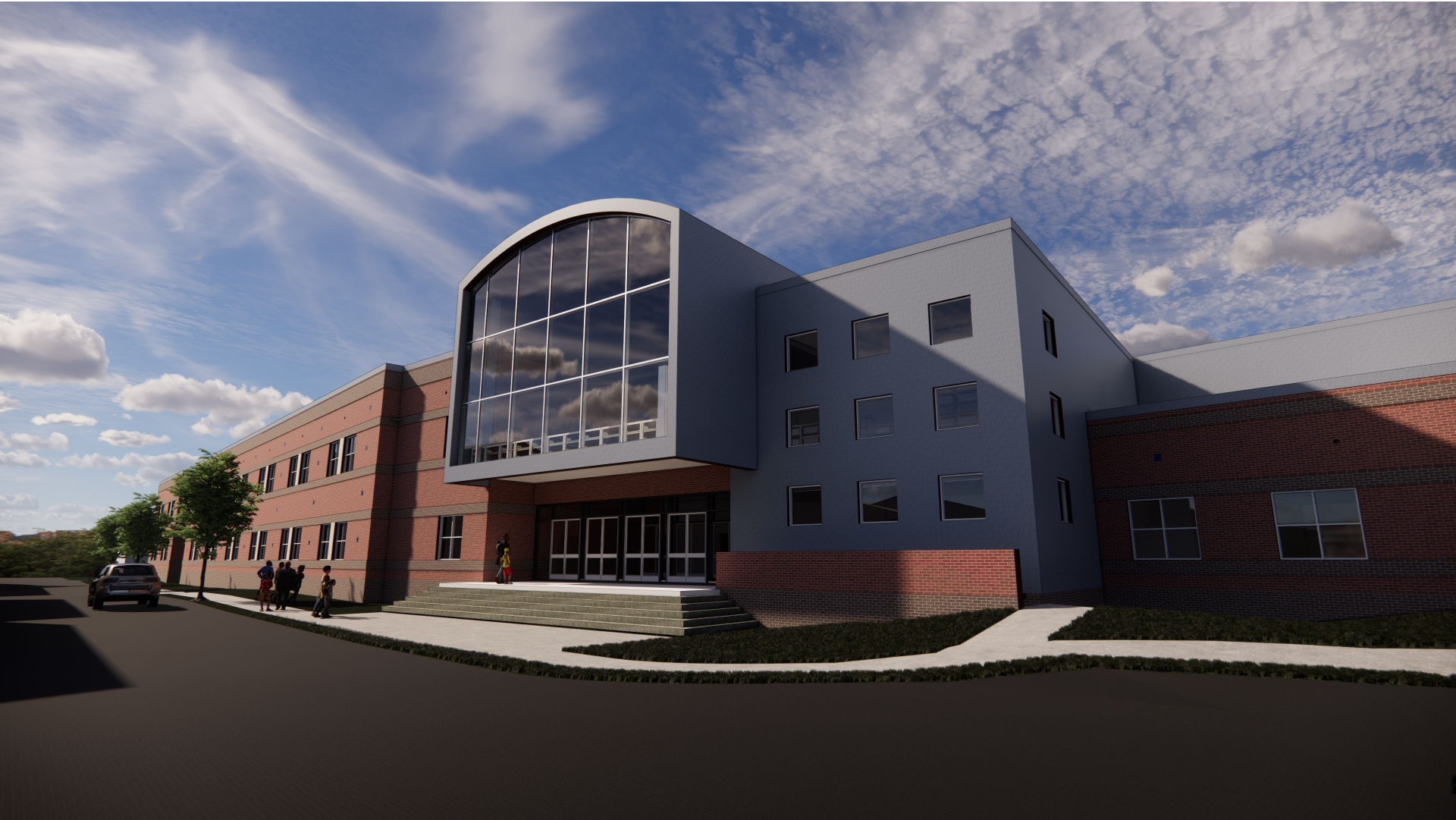
# The New Bancroft School and Neighborhood Campus



## Building Elevation

**ABHA | BSA+A**

# Building Elevation – Main Entrance



# The New Bancroft School and Neighborhood Campus



Phase 2 DD Approval

ABHA | BSA+A





**NEW PROJECT FUNDING ALLOCATION**

**FY 2021:** **\$7.5M**  
Allocated by State of Delaware  
Toward City of Wilmington projects  
Directed to Bancroft School project

**FY 2022:** **\$65M**  
Allocated by State of Delaware  
Directed to Bancroft School project

**Future Projected State Funding:** **\$9.5M**

**TOTAL PROJECT BUDGET:** **\$82M**

**PROJECT BUDGET** **\$82M**

**PROJECT SCHEMATIC DESIGN ESTIMATE:**

BUILDING	\$ 78.5M
SITE WORK & DEMOLITION	<u>\$ 10.2M</u>

**ESTIMATE TOTAL** **\$88.7M\***

**\*Estimate Value INCLUDES \$4.6M in Project Contingency**

**Current Budget Gap: \$6.7M**

**POTENTIAL DESIGN ALTERNATES FOR COST REDUCTION ONGOING**

## POTENTIAL ALTERNATES / CONSIDERATIONS TO MEET BUDGET CONSTRAINTS

### Alternates/Scope Reduction Items

- Delete (4) Classrooms / (2) Commons
- Delete 5<sup>th</sup> Grade Learning Commons
- Addl. Misc. VE (Bldg. systems/materials)
- Reduce Curtainwall (Full ht. glass)
- Reduce Auditorium Systems
- Shell Library / Auditorium / Music
- Delete Bleachers @ Gym

# The New Bancroft School and Neighborhood Campus



## Next Steps

- 
- **Programming/Ed Spec Phase Complete (May 12, 2021)**
  - **Schematic Design Phase (September 2021)**
  - **Design Development Phases (Late Fall 2021)**
  - **Relocation of Drew (Early 2022)**
  - **Construction Contract Bid Approval(s)**  
**(Various: Late 2021-Early 2022)**

**Note: All dates will be coordinated with Construction Manager's master schedule.**

# The New Bancroft School and Neighborhood Campus



## Questions & Answers

# The New Bancroft School and Neighborhood Campus

Presentation to Board of Education  
December 7, 2021

